

# 27four Progressive CPI+5% Fund

30 Apr 2023



## Fund Information

<b>Investment Manager</b>	27four Investment Managers (Pty) Ltd, a category II licensed financial services provider, FSP No: 31045
<b>Inception Date</b>	30 September 2019
<b>Strategic Benchmark</b>	Capped SWIX All Share (38%), ALBI (11%), CILI (7%), ALPI (5%), CPI+3% (8%), STeFI (6%), MSCI World Price Index (22%), Bloomberg Global Aggregate Bond TR (3%)
<b>Target Benchmark</b>	CPI+5%
<b>Base Currency</b>	ZAR
<b>Fund Size</b>	R127,552,018.01

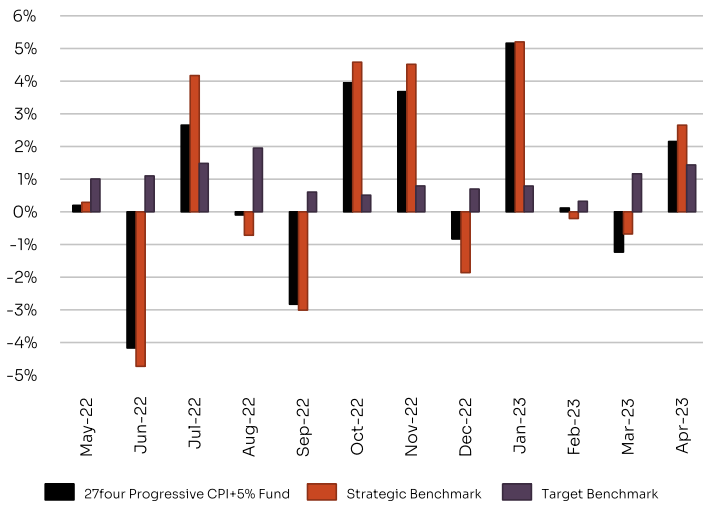
## Fund Description

The 27four CPI+5% Fund is a moderate risk multi-managed, multi-asset class portfolio providing asset class and fund manager diversification by investing in a combination of equity, listed property and fixed income funds, both locally and internationally. Suitable for investors with a medium-term investment horizon. The primary objectives are moderate capital growth and income generation.

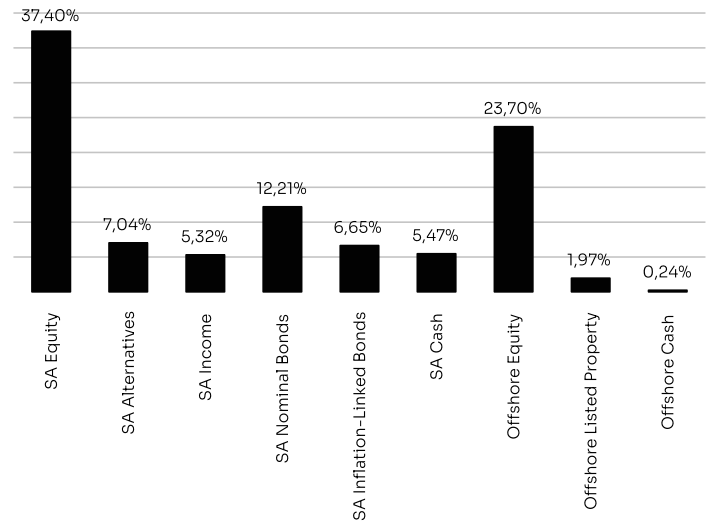
## Risk Profile



## Performance Summary



## Asset Allocation



## Performance Analysis

	Fund	Strategic Benchmark	Target Benchmark
1 Month	2.15%	2.65%	1.44%
3 Months	1.01%	1.75%	2.93%
6 Months	9.22%	9.79%	5.23%
YTD	6.23%	7.04%	3.73%
1 Year	8.64%	10.05%	12.07%
3 Years (Annualised)	12.43%	13.84%	10.40%
5 Years (Annualised)	-	-	-
Inception (Annualised)	8.93%	9.53%	10.11%
Inception (Cumulative)	36.82%	39.64%	44.04%
Highest Rolling 1 Year Return	26.96%	32.80%	12.85%
Lowest Rolling 1 Year Return	-4.03%	-4.82%	7.80%

## Underlying Manager Breakdown

Asset Class	Fund/s
SA Equity	Progressive SA Active Equity Fund
SA Alternatives	27four SA Alternative fund
SA Income	Aluwani Capital Flexible Income Fund
SA Nominal Bonds	Balondolozzi SA Bond Fund
SA Inflation-Linked Bonds	Balondolozzi ILB Fund
SA Cash	Nedgroup Investments Core Income Fund
SA Cash	ZAR Call Account
Offshore Equity	27four Global Equity Fund of Funds USD
Offshore Equity	Lodestar Global Equity 27four Fund
Offshore Listed Property	Sesfikile BCI Global Property Fund
Offshore Cash	USD Call Account

## Monthly Fund Performance

	2019	2020	2021	2022	2023
Jan	-	0.73%	2.05%	-1.41%	5.16%
Feb	-	-4.16%	2.81%	0.58%	0.12%
Mar	-	-9.49%	1.76%	0.40%	-1.23%
Apr	-	8.55%	1.56%	-1.23%	2.15%
May	-	0.58%	0.45%	0.20%	-
Jun	-	2.70%	0.41%	-4.17%	-
Jul	-	1.81%	2.01%	2.65%	-
Aug	-	0.72%	1.95%	-0.10%	-
Sep	-0.54%	-1.78%	-0.63%	-2.83%	-
Oct	2.02%	-2.78%	2.26%	3.95%	-
Nov	-0.52%	5.79%	1.57%	3.68%	-
Dec	0.56%	2.39%	3.42%	-0.83%	-
Yr.	1.51%	3.91%	21.43%	0.56%	6.23%

## Risk Analysis

	Fund	Strategic Benchmark	Target Benchmark
Volatility (Annualised)	10.12%	12.27%	1.49%
% Positive Months	68.18%	65.91%	95.45%
% Negative Months	31.82%	34.09%	4.55%
Best Month	8.55%	11.09%	1.95%
Worst Month	-9.49%	-11.74%	-0.23%
Average Negative Months	-2.26%	-2.53%	-0.18%
Maximum Drawdown	-13.25%	-16.45%	-
Tracking Error	17.91%	-	-
Sharpe Ratio	0.36	-	-

## Contact Us

27four Investment Managers (Pty) Ltd, Registration number: 2007/006556/07 is an authorised Financial Services Provider (FSP 31045) under the Financial Advisory and Intermediary Services Act (No.37 of 2002), to act in the capacity as investment manager. This information is not advice, as defined in the Financial Advisory and Intermediary Services Act (NO.37 of 2002). Please be advised that there may be representatives acting under supervision • Physical address: Firestation Rosebank, Fifth Floor, 16 Baker Street, Rosebank, 2196 • Postal address: PO Box 522417, Saxonwold, Johannesburg, 2132 • Telephone number: 011 442 2464 • Website: www.27four.com

## Disclaimer

27four Investment Managers (Pty) Ltd is a licensed financial services provider in terms of Section 8 of the Financial Advisory and Intermediary Services Act, 37 of 2002, as amended, FAIS licence number 31045. This information is not advice as defined and contemplated in the Financial Advisory and Intermediary Services Act, 37 of 2002, as amended. Past investment returns are not indicative of future returns. 27four Investment Managers (Pty) Ltd shall not be liable for any actions taken by any person based on the correctness of this information. This document is for information purposes only and does not constitute or form part of any offer to issue or sell or any solicitation of any offer to subscribe for or purchase any particular investments. Opinions expressed in this document may be changed without notice at any time after publication. We therefore disclaim any liability for any loss, liability, damage (whether direct or consequential) or expense of any nature whatsoever which may be suffered as a result of or which may be attributable directly or indirectly to the use of or reliance upon the information.

## Investment Terms

	Fees
Initial Fee	0.00%
Annual Management Fee	Contact 27four for a quote
Minimum Investment Size	No minimum required

## Income Distribution

No distribution

## Glossary

**Annualised performance:** Annualised performance show longer term performance rescaled to a 1 year period. Annualised performance is the average return per year over the period. Actual annual figures are available to the investor on request.

**Best month:** Largest increase in any single month.

**Highest & lowest return:** The highest and lowest returns over any 1 year period since the inception date.

**Max drawdown:** The maximum peak to trough loss suffered by the Fund since inception.

**NAV:** The net asset value represents the assets of a Fund less its liabilities.

**Sharpe ratio:** The Sharpe ratio is used to indicate the excess return the portfolio delivers over the risk free rate per unit of risk adopted by the fund.

**Standard deviation:** The deviation of the return stream relative to its own average.

**Tracking error:** The volatility of the difference in returns between a Fund and its Benchmark. Also known as active risk.

**% positive months:** The percentage of months since inception where the Fund has delivered positive return.

